

## Rab11

**Catalog Number:** 26030

**Gene Symbol:** RAB11

**Description:** Anti-Rab11 Mouse Monoclonal Antibody

**Background:** Small GTPases of the Rab-family are crucial elements of the machinery that controls membrane traffic. Rab11 has been shown to control traffic through the recycling endosome.

**Immunogen:** Recombinant full-length protein of Rab11A.

**Tested Applications:** ELISA, WB, IHC, IP

**Recommended Dilutions:**

ELISA 1:100-1:5000

WB 1:100-1:1000

IHC 1:50-1:100

**Concentration:** 1 mg/ml

**Host:** Mouse

**Clonality:** Monoclonal

**Isotype:** IgG

**Purity:** Purified from ascites

**Format:** Liquid

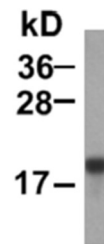
**Preservative:** No

**Constituents:** PBS (without  $Mg^{2+}$  and  $Ca^{2+}$ ), pH7.4, 150 mM NaCl, 50% glycerol

**Species Reactivity:** Rab11 antibody recognizes Rab11 proteins of vertebrates.

**Storage Conditions:** Store at  $-20^{\circ}C$ . Avoid freeze / thaw cycles

**Western blot:**



**WB: anti-Rab11 mAb**

Western blot analysis of recombinant Rab11A proteins (Cat# 26030).

FOR RESEARCH USE ONLY. NOT FOR DIAGNOSTIC APPLICATIONS